

# SADDLE POINT TECHNOLOGIES

## Cloud Based Integrated Supply Chain Planning and Optimization Suite

Building Operational Efficiency in Complex Supply Chains



Dispatch Planner and Optimizer

# Saddle Point Technologies offers an integrated cloud based supply chain planning and optimization suite that are used for optimizing complex supply chain planning processes.

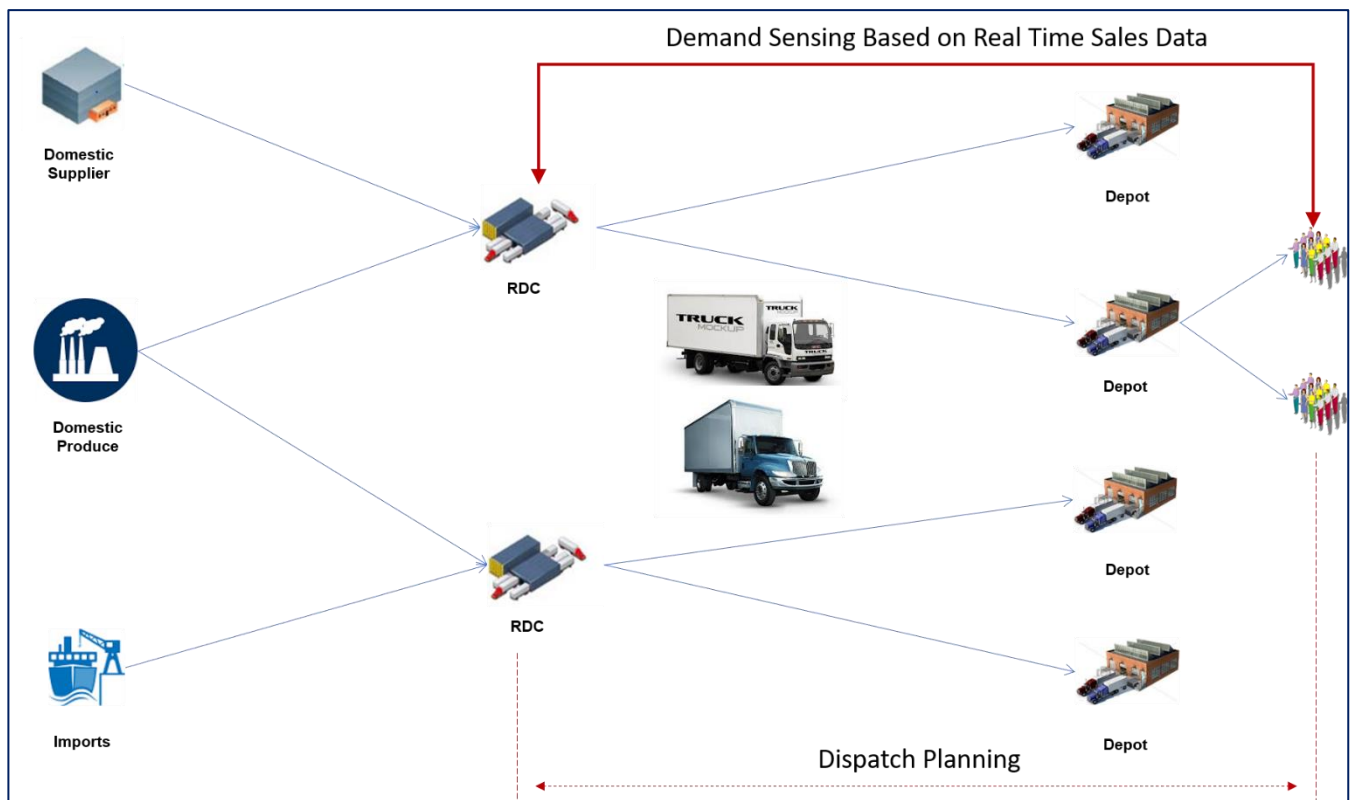
- Addresses processes like Sales, Distribution, Production and Procurement
- Caters to Strategic, Tactical and Operational levels of planning
- Extremely easy to use with spreadsheet like functionalities
- KPI dashboard for industry standard Supply Chain metrics
- Cloud solution with a SaaS offering
- Integrated with leading ERP systems like SAP, Netsuite and Exact

<p><b>SCP Cloud Suite</b></p>  <p>Cloud based end-to-end integrated Supply Chain Planning and Optimization Suite with a SaaS offering.</p>	<p><b>Demand Planner</b></p>  <p>Collaborative Demand Planning with Forecasting, Promotions Planning, NPI and Sentiment Analysis modules.</p>	<p><b>Supply Chain Optimizer</b></p>  <p>Generate a low cost fulfillment plan by reducing supply chain costs like production, transportation, inventory and procurement .</p>	<p><b>Inventory Optimizer</b></p>  <p>Reduce inventory cost by determining optimal inventory levels based on SLAs, lead time and demand and supply variability.</p>
<p><b>Procurement Optimizer</b></p>  <p>Minimize total procurement cost across all vendors by considering volume discount and constraints like Lot size, MOQ, Min-Max quota</p>	<p><b>Production Planner</b></p>  <p>Generate capacity and material feasible production plans (Rule based Heuristics) or optimal production plans (Optimizer based)</p>	<p><b>Transportation Optimizer</b></p>  <p>Minimize total transportation cost by using fleet capacity efficiently, consolidating loads and better rake/truck requirement planning.</p>	<p><b>Production Scheduler</b></p>  <p>Create constrained production schedule with make span minimization based on job shop, flow shop and hybrid layout.</p>
<p><b>Vehicle Route Planner</b></p>  <p>Generate feasible and optimal routes based on constraints like delivery time windows, pickup or delivery, vehicle capacity etc.</p>	<p><b>Workforce Optimizer</b></p>  <p>Allocate workforce optimally to multiple projects based on resource costs, skill-set levels, learning curve, transition cost.</p>	<p><b>Shift Scheduler</b></p>  <p>Generate a feasible shift schedule by adhering to shift assignment rules like maximum consecutive night shifts, forbidden shifts etc.</p>	<p><b>Facilities Planner</b></p>  <p>Find the best location for a new plant or warehouse from a list of candidate locations that optimizes the supply chain.</p>



## Dispatch Planner and Optimizer

Dispatch Planner and Optimizer considers the complete downstream distribution network and plans for optimal dispatches based on material and vehicle availability constraints, vehicle capacity and warehouse capacity constraints, transportation time constraints and tries to minimize the total distribution cost across the network.



Various other parameters like forecasted demand, time phased demand profiling, storage and transportation cost, customer SLA, finished goods and in-transit stock, production plan, transportation lead-time and safety stock requirements are all considered to arrive at the optimal dispatch plan.

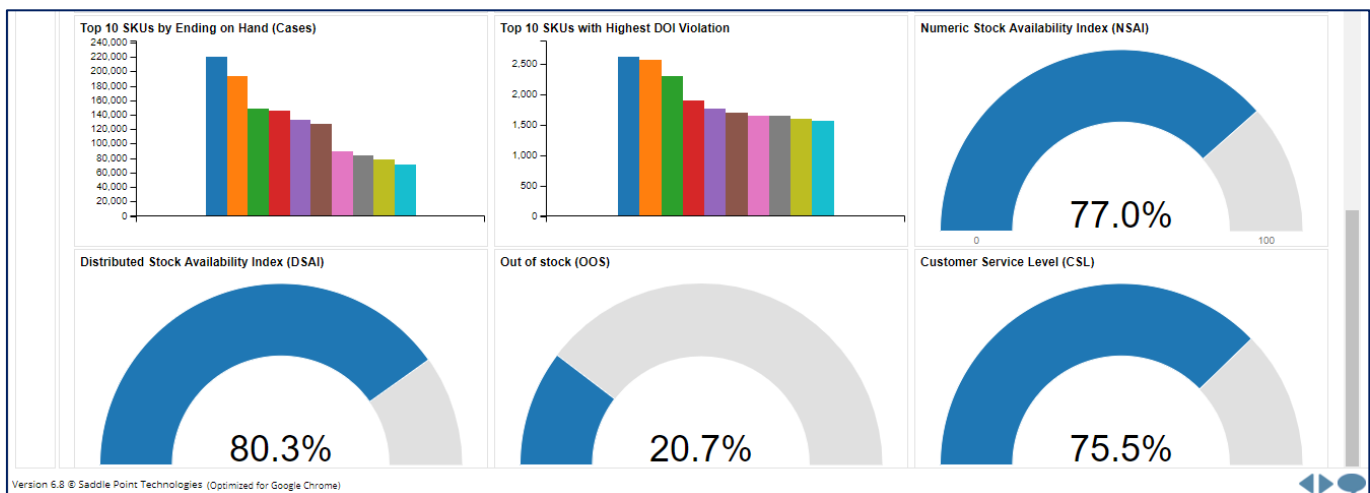
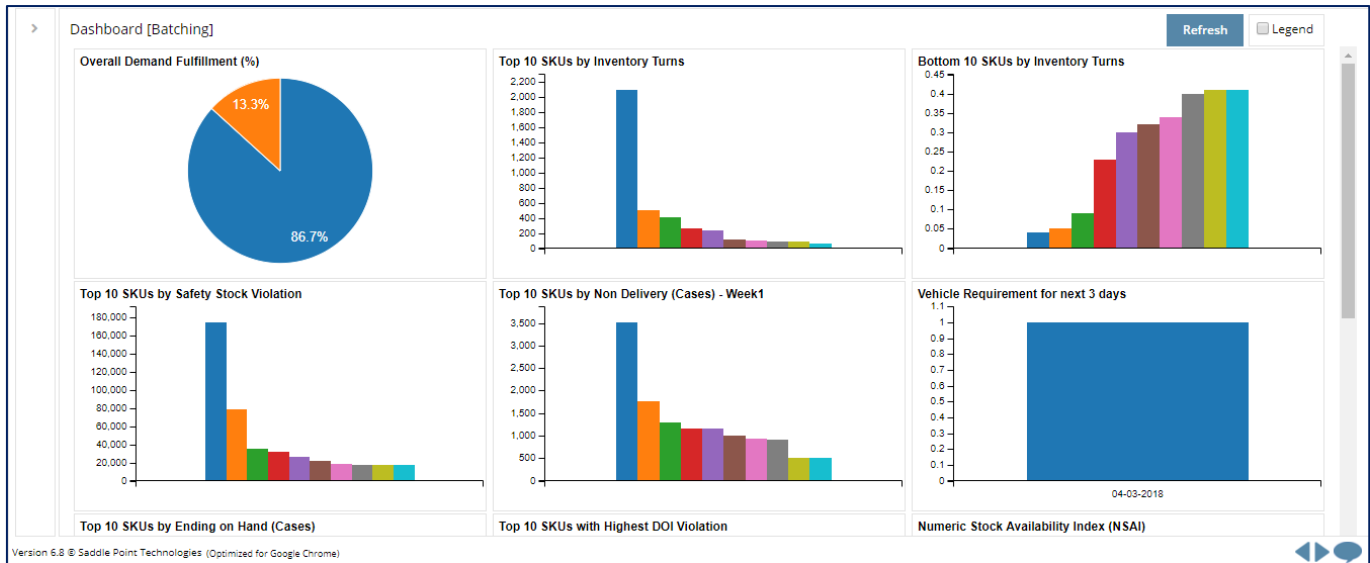
## Key Differentiators:

- Channel specific stock and demand can be incorporated for generating a channel specific dispatch plan.
- Demand sensing feature considers the real time dealer/depot demand and ensures that short-term demand fluctuations are ironed out and that dispatch is made to a relevant forecast.
- Shelf-life based dispatch plan ensures that supply with the required shelf life is available to meet the demand.
- Truck load builder looks at forward looking forecast and fills the extra space with SKUs that will go short in the future horizon thereby reducing expedited shipping and reducing the number of vehicles required.

## Additional Features:

- Optimizes dispatch with a global optimization engine for a multi echelon and multi node network.
- Incorporates cost elements like transportation cost, taxes, inventory cost, stock-out cost and late delivery cost into the plan.
- Fixed and variable transportation costs for different vehicle types can be modelled.
- Seamlessly integrates with upstream modules like Demand Planner and Inventory Optimizer and downstream modules like Container Load Optimizer.

## Standard KPIs:



## Standard Reports:

- Dispatch Plan in Cases and Units
- Number of Vehicle Required and the Type of Vehicle Required
- Material View at Dispatch Location and at Receipt Location
- Total Dispatch Plan Cost
- Demand Shortage and Late Delivery